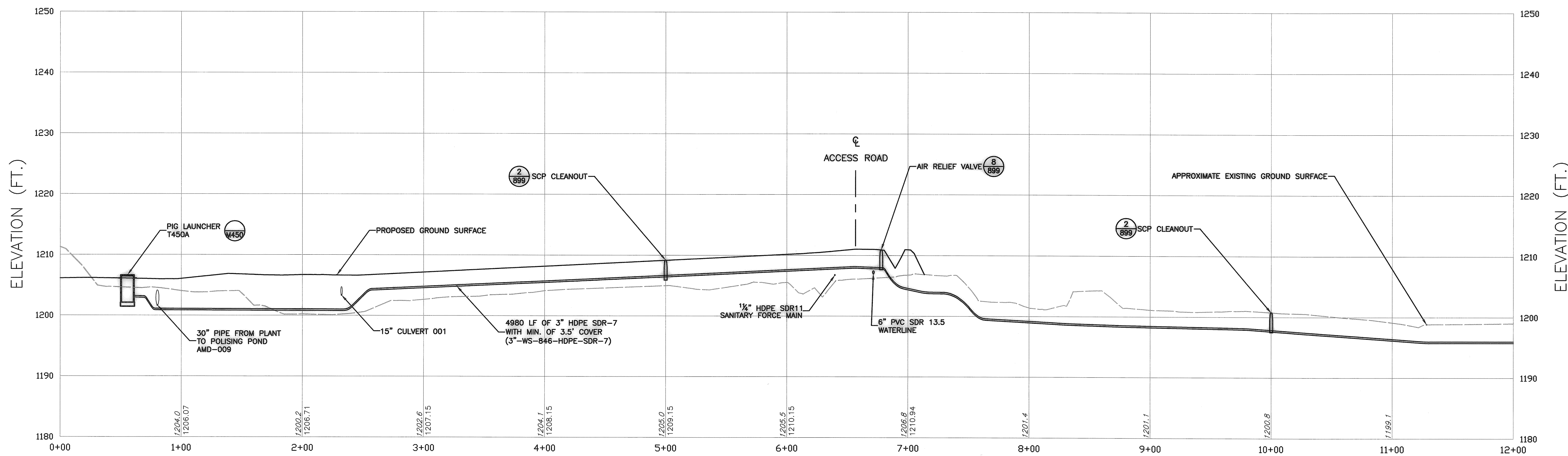


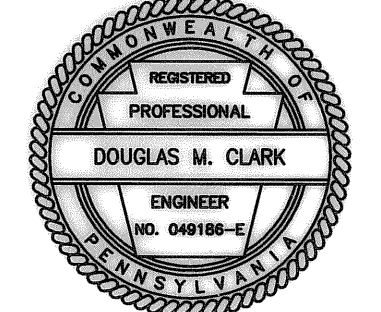
PLAN
SCALE IN FEET
0 50 100



SCP ALIGNMENT PROFILE
SCALE IN FEET - HORIZONTAL 0 50 100
SCALE IN FEET - VERTICAL 0 10 20

3	08/30/07	FINAL SUBMITTAL	
2	03/02/07	PRE-FINAL SUBMITTAL	
1	11/10/06	PRELIMINARY DESIGN SUBMITTAL	
NO.	DATE	REVISION	APPR.

SUBMITTED: *Jonathan M. Clark* 11/17/08
 PROJECT DESIGNER
 RECOMMENDED: *Chris C. Goon*
 DESIGN SECTION CHIEF-CAMBRIA OFFICE
 APPROVED: *J. Scott Small*
 ENVIRONMENTAL PROGRAM MANAGER-CAMBRIA OFFICE



COMMONWEALTH OF PENNSYLVANIA
 DEPARTMENT OF ENVIRONMENTAL PROTECTION
 CONTRACT NO. OSM 17(1416)102.1

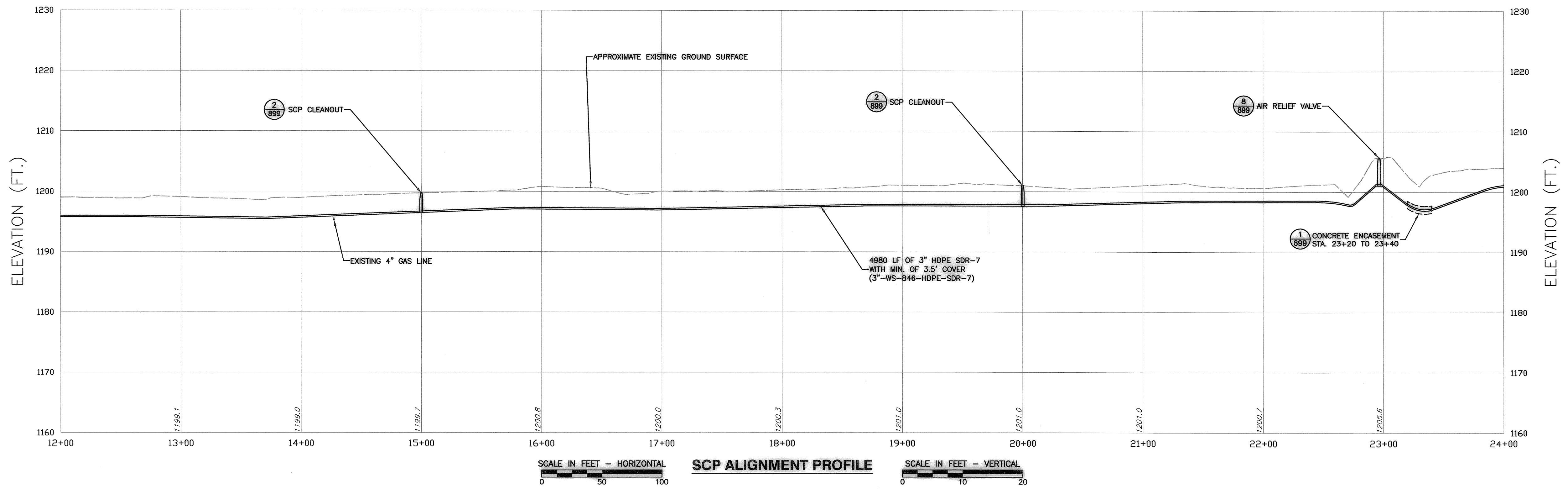
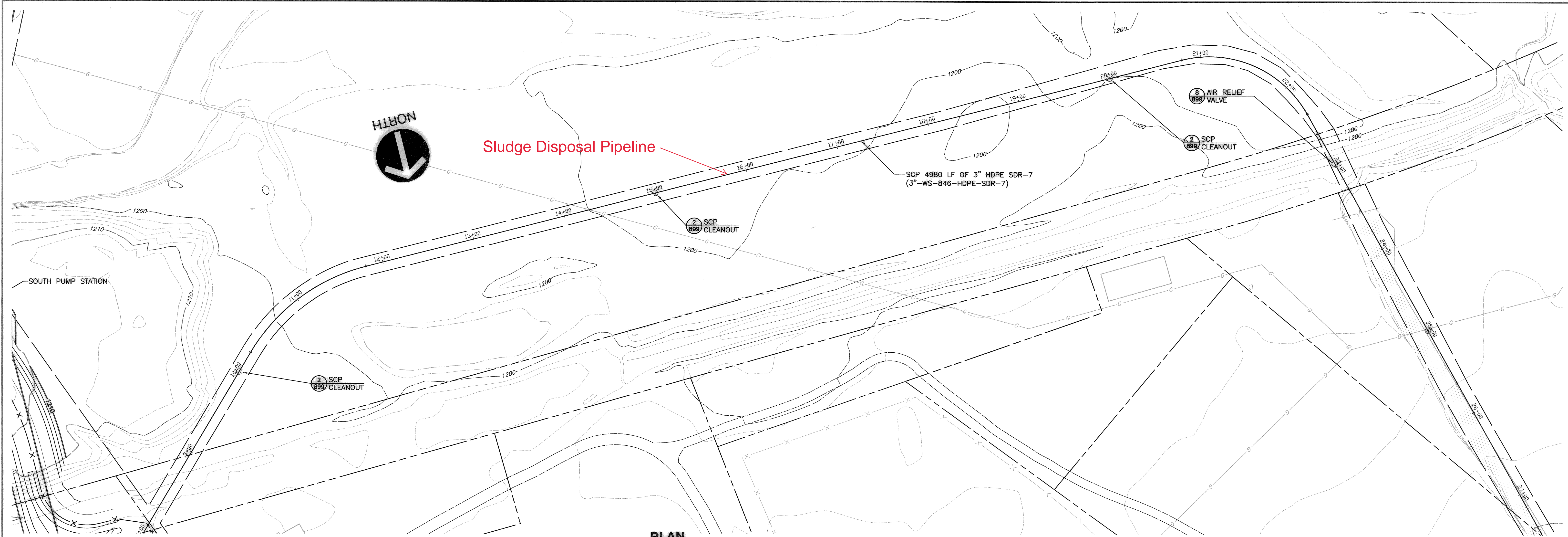
**HOLLYWOOD AMD
 ABATEMENT PROJECT**

HUSTON TOWNSHIP, CLEARFIELD COUNTY AND JAY TOWNSHIP, ELK COUNTY
**SCP ALIGNMENT
 SLUDGE CONVEYANCE PIPELINE
 PLAN & PROFILE**

DRAWN BY: TPM	DATE: 07-12-2006	DRAWING NO.:
CHECKED BY: DMC	SCALE: AS SHOWN	C-810
ACAD DRAWING NO. 060838-C810		

ALL DIMENSIONS AND EXISTING CONDITIONS SHALL BE CHECKED AND VERIFIED BY CONTRACTOR AT THE SITE.

C:\PROJECTS\2006\060838-C810.DWG (TPM\MARTIN) - AUG 29, 2007 - 16:18:29



3	08/30/07	FINAL SUBMITTAL	
2	03/02/07	PRE-FINAL SUBMITTAL	
1	11/10/06	PRELIMINARY DESIGN SUBMITTAL	
NO.	DATE	REVISION	APPR.

SUBMITTED *John M. Clark* 1/19/08
 PROJECT DESIGNER
 RECOMMENDED *Douglas M. Clark*
 DESIGN SECTION CHIEF-CAMBERA OFFICE
 APPROVED *P. Steve Howell*
 ENVIRONMENTAL PROGRAM MANAGER-CAMBERA OFFICE



COMMONWEALTH OF PENNSYLVANIA
 DEPARTMENT OF ENVIRONMENTAL PROTECTION
 CONTRACT NO. OSM 17(1416)102.1

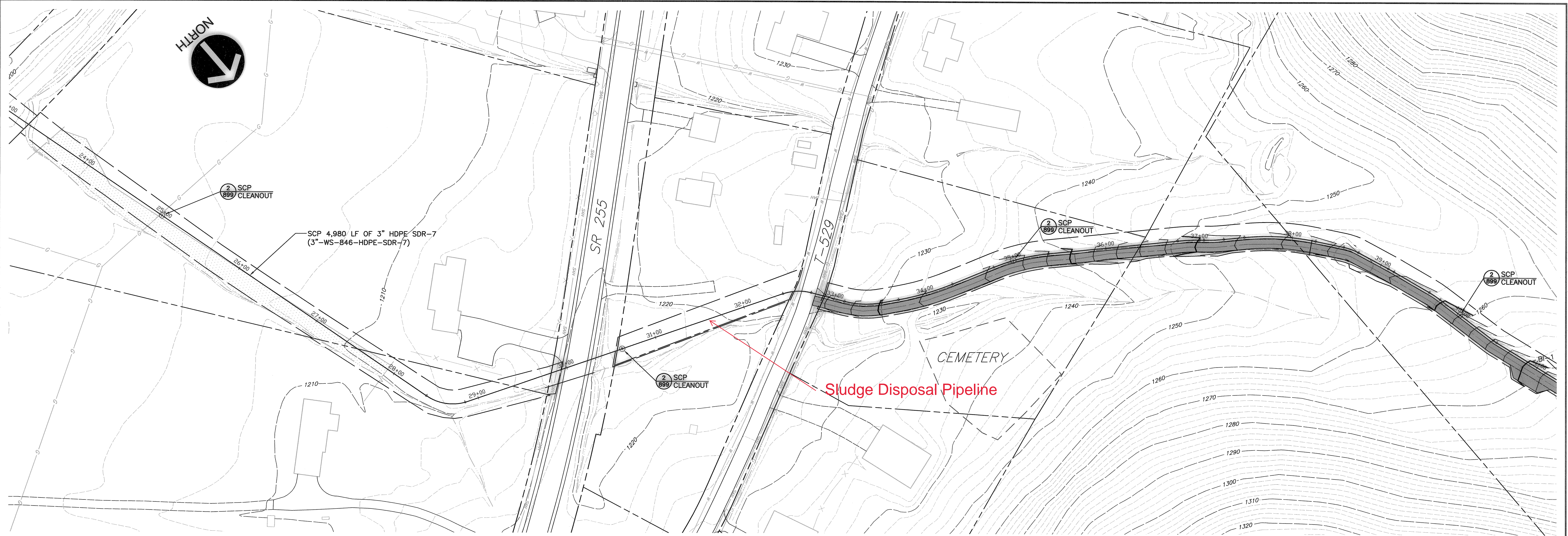
HOLLYWOOD AMD
 ABATEMENT PROJECT
 HUSTON TOWNSHIP, CLEARFIELD COUNTY AND JAY TOWNSHIP, ELK COUNTY

SCP ALIGNMENT
 SLUDGE CONVEYANCE PIPELINE
 PLAN & PROFILE

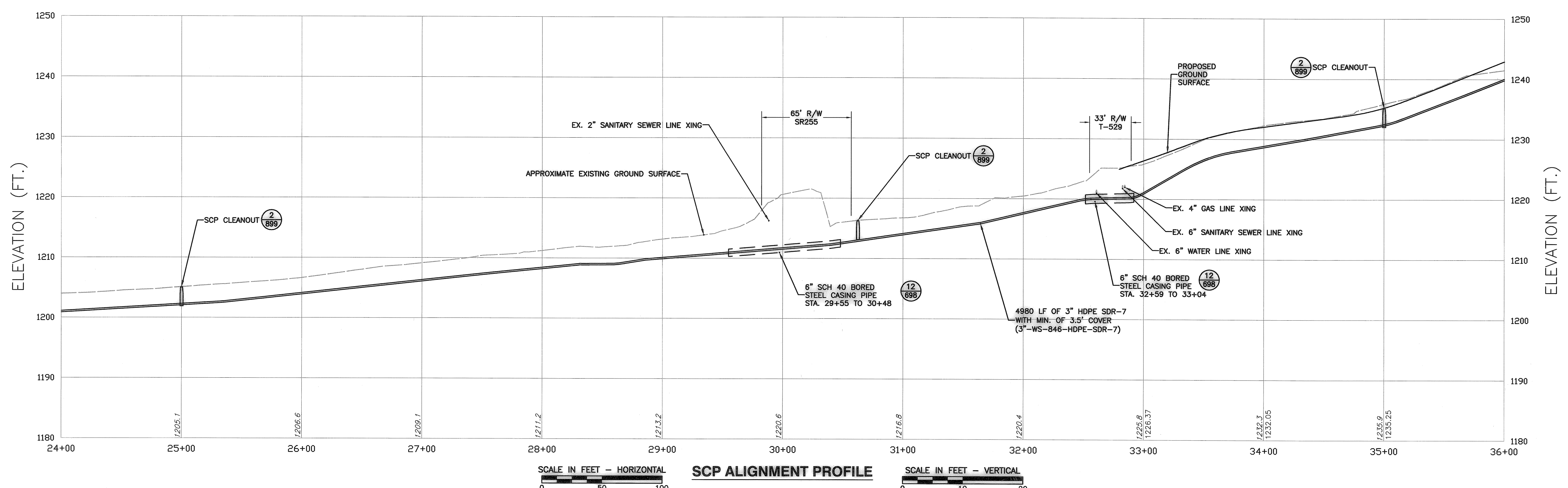
DRAWN BY: TPM	DATE: 07-12-2006	DRAWING NO.:
CHECKED BY: DMC	SCALE: AS SHOWN	C-811
ACAD DRAWING NO. 060838-C810		

ALL DIMENSIONS AND EXISTING CONDITIONS SHALL BE CHECKED AND VERIFIED BY CONTRACTOR AT THE SITE.

I:\SWP-PITT\CA00\PROJECTS\2006\060-848\DWG\060838-C810.DWG [811] (TPMARTIN) - JAN 23, 2008 - 8:27:53



PLAN
SCALE IN FEET
0 50 100



SCP ALIGNMENT PROFILE
SCALE IN FEET - HORIZONTAL 0 50 100
SCALE IN FEET - VERTICAL 0 10 20

NO.	DATE	REVISION	APPR.
3	08/30/07	FINAL SUBMITTAL	
2	03/02/07	PRE-FINAL SUBMITTAL	
1	11/10/06	PRELIMINARY DESIGN SUBMITTAL	

SUBMITTED: *John M. Dell*
PROJECT DESIGNER
RECOMMENDED: *Cliff C. Goo*
DESIGN SECTION CHIEF-CAMBRIA OFFICE
APPROVED: *G. Scott Howell*
ENVIRONMENTAL PROGRAM MANAGER-CAMBRIA OFFICE



COMMONWEALTH OF PENNSYLVANIA
DEPARTMENT OF ENVIRONMENTAL PROTECTION
CONTRACT NO. OSM 17(1416)102.1

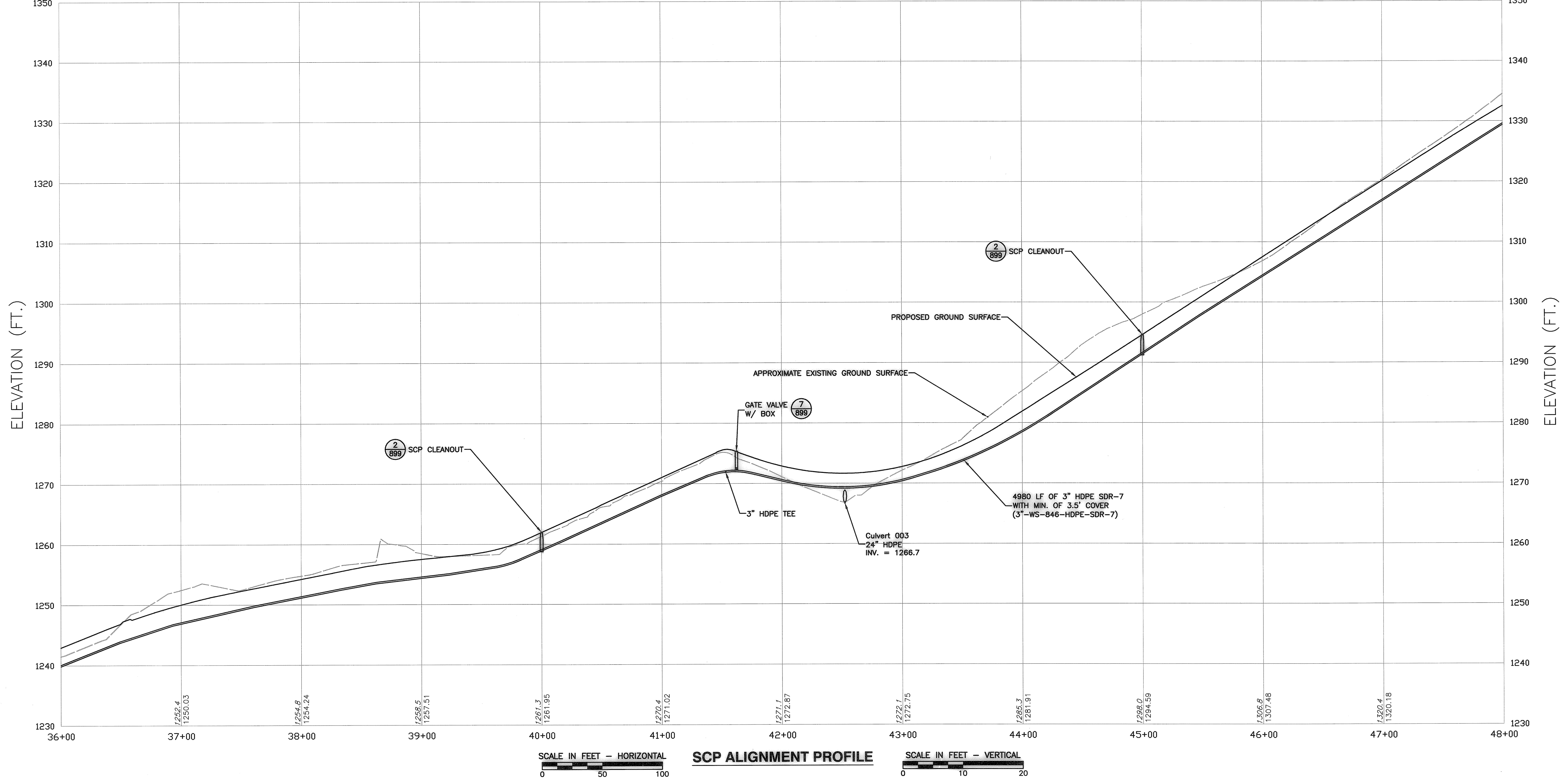
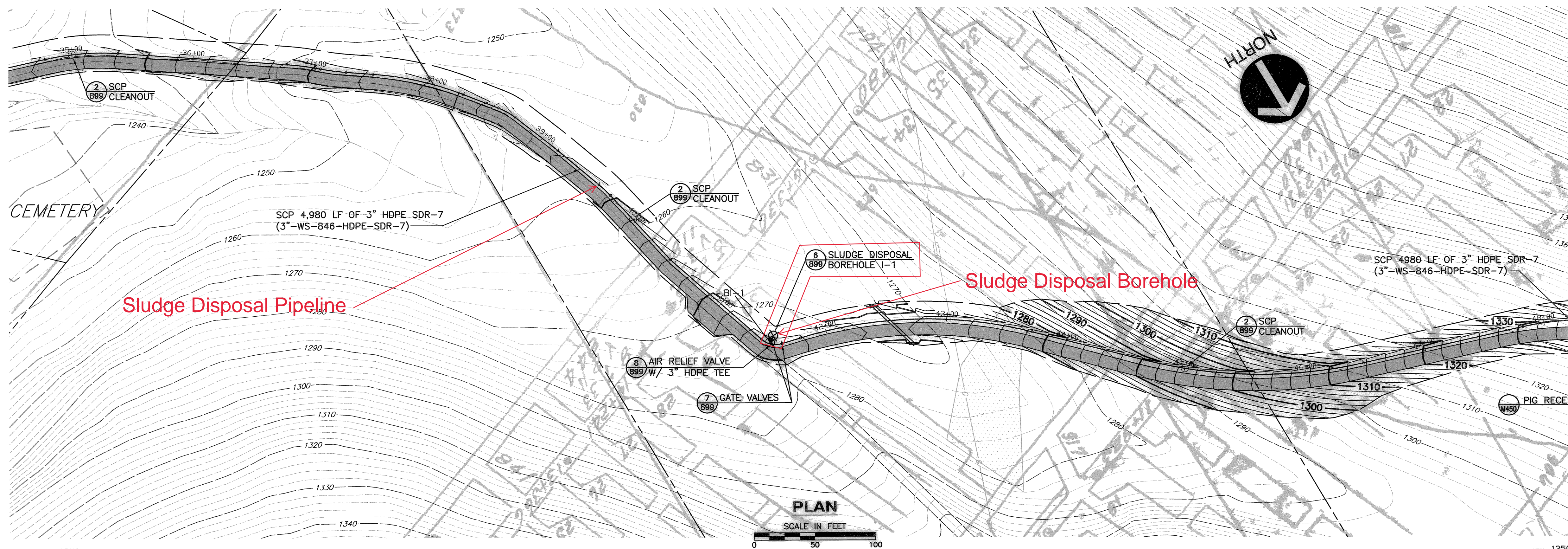
**HOLLYWOOD AMD
ABATEMENT PROJECT**
HUSTON TOWNSHIP, CLEARFIELD COUNTY AND JAY TOWNSHIP, ELK COUNTY
**SCP ALIGNMENT
SLUDGE CONVEYANCE PIPELINE
PLAN & PROFILE**

DRAWN BY: TPM DATE: 07-12-2006 DRAWING NO.:
CHECKED BY: DMC SCALE: AS SHOWN
ACAD DRAWING NO. 060838-C810

C-812

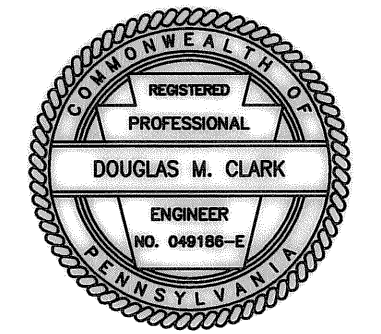
ALL DIMENSIONS AND EXISTING CONDITIONS SHALL BE CHECKED AND VERIFIED BY CONTRACTOR AT THE SITE.

\\SPR-PIT\CAD\PROJECTS\2006\060838-818\DWG\060838-C810.DWG [812] (TPM:RTM) - JAN 23, 2008 - 8:31:57



NO.	DATE	REVISION	APPR.
3	08/30/07	FINAL SUBMITTAL	
2	03/02/07	PRE-FINAL SUBMITTAL	
1	11/10/06	PRELIMINARY DESIGN SUBMITTAL	

SUBMITTED: *John M. Clark* 11/10/08
 PROJECT DESIGNER
 RECOMMENDED BY: *Chris C. Cogan*
 DESIGN SECTION CHIEF-CAMBRIA OFFICE
 APPROVED: *J. Steve Howell*
 ENVIRONMENTAL PROGRAM MANAGER-CAMBRIA OFFICE



COMMONWEALTH OF PENNSYLVANIA
 DEPARTMENT OF ENVIRONMENTAL PROTECTION
 CONTRACT NO. OSM 17(1416)102.1

HOLLYWOOD AMD
 ABATEMENT PROJECT
 HUSTON TOWNSHIP, CLEARFIELD COUNTY AND JAY TOWNSHIP, ELK COUNTY
 SCP ALIGNMENT
 SLUDGE CONVEYANCE PIPELINE
 PLAN & PROFILE

DRAWN BY: TPM DATE: 07-12-2006 DRAWING NO.: C-813
 CHECKED BY: DMC
 ACAD DRAWING NO.: 060838-C810 SCALE: AS SHOWN

ALL DIMENSIONS AND EXISTING CONDITIONS SHALL BE CHECKED AND VERIFIED BY CONTRACTOR AT THE SITE.

\\SRV-PIT\CAD\PROJECTS\2006\060-838\DWG\060838-C810.DWG [8/13] [PM:ARTIN] - JAN 23, 2008 - 8:35:24